

NATIONAL EMPLOYMENT REPORT

CANADA | February 2022

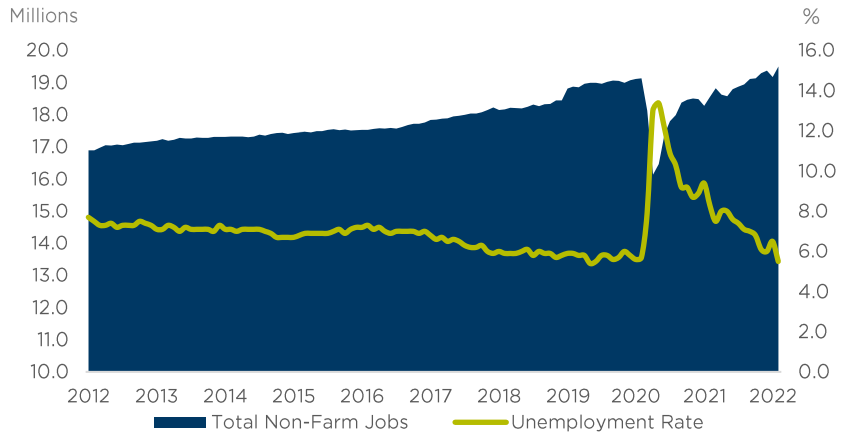


2021 GDP Growth **4.6%**
2022F GDP Growth **3.9%**
Estimated

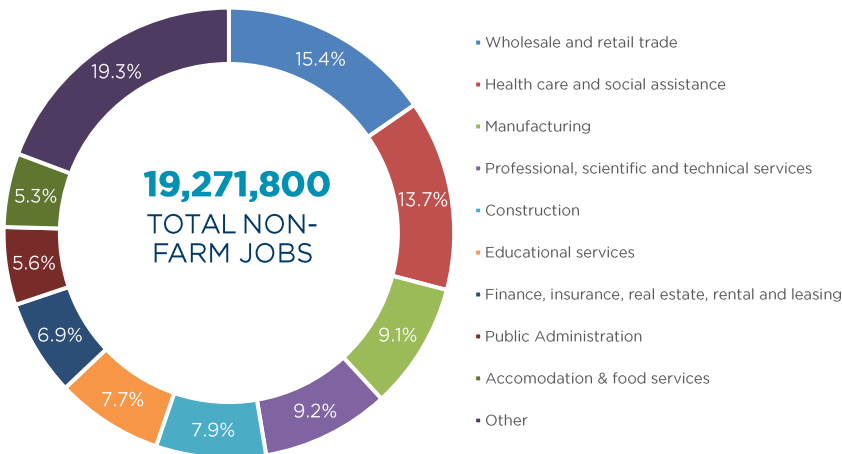
Unemployment Rate
8.3% Feb. 2021
5.5% Feb. 2022

Road to Recovery
-3.0M Mar.-Apr. 2020 Total Jobs Losses
3.4M May 2020-Feb. 2022 Total Jobs Gains

Total Non-Farm Employment vs. Unemployment Rate



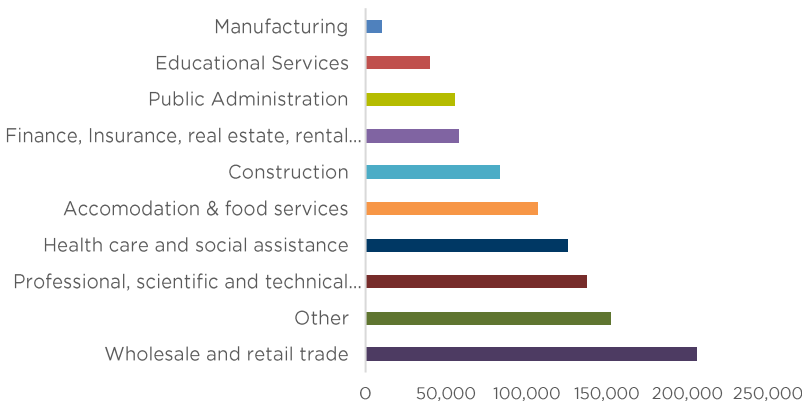
Employment by Industry



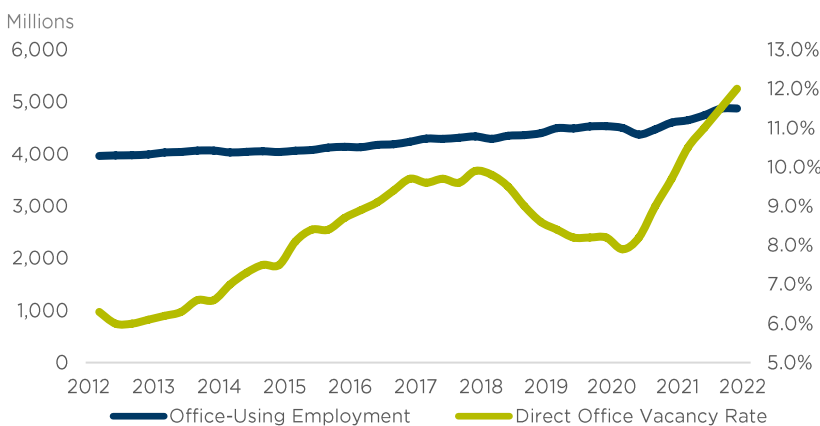
Employment Change Feb. 2021 vs. Feb. 2022

| City | Change | Gains | No. of Jobs |
|---------------------------|--------|-------|-------------|
| VANCOUVER | 4.5% | 66K | 1.5M |
| CALGARY | 4.4% | 35K | 841K |
| EDMONTON | 6.1% | 45K | 787K |
| SASKATOON | 13.3% | 22K | 190K |
| WINNIPEG | 6.6% | 28K | 455K |
| KITCHENER/WATERLOO | 4.8% | 15K | 329K |
| LONDON | 7.6% | 20K | 292K |
| TORONTO | 8.0% | 262K | 3.5M |
| OTTAWA | 0.7% | 4K | 585K |
| MONTREAL | 5.1% | 113K | 2.3M |
| HALIFAX | 1.2% | 3K | 242K |

Year-Over-Year Job Changes by Sector (Feb. 2021 vs. Feb. 2022)



Office-Using Employment vs. Direct Office Vacancy



For more information, please contact:

Kristina Bowman
Senior Manager of Research
416 359 2419
kristina.bowman@cushwake.com

©2022 Cushman & Wakefield. The information contained within this report is gathered from multiple sources believed to be reliable. The information may contain errors or omissions and is presented without any warranty or representations as to its accuracy.